



Warminster Area Board  
December 2016

As we move towards the festive period, Wiltshire Police is preparing to launch our annual Christmas campaign on Monday 12 December.

At this time of year, many people across the county will be out celebrating the festivities with friends and colleagues at Christmas parties and as usual we'll be pointing out the dangers not only of drink driving, but drug driving too.

Despite the dangers being well known, some drivers continue to put other people's lives at risk by drinking or taking drugs before getting behind the wheel. Take a few minutes to plan your safe journey home, share a lift with someone who is driving, book a taxi, or if it is safe, arrange to walk home with some friends.

Officers will be out and about throughout the period to offer reassurance and advice, and to help keep everyone safe.

There are of course other dangers at this time of year. Criminals are more than ready to take advantage of some of the more vulnerable people in our society. A lot of people will be out Christmas shopping and this inevitably means more people carrying cash.

We would always advise to:

- Only take out as much money as you need, keep it in a purse or wallet and safely tucked away.
- Never leave your bags unattended, particularly on shopping trolleys and be aware of people around you at all times.
- Carry your bag close to you with the clasp facing inwards.
- Keep it zipped up, and make sure your wallet or purse can't be seen.
- Avoid carrying valuables or large amounts of cash and spread your possessions about. For example, consider keeping your mobile phone separate from your keys and your store or credit cards separate from your purse.
- Finally, never carry PIN numbers with any cards.

With an increase in shopping, vehicles can also be a target for thieves as shoppers fill their cars with presents as they visit different shops and shopping centres in Wiltshire. We would always advise to:

- Try to keep shopping out of view, and if you can, take it home as soon as possible.
- In a town centre the safest place to park is in a car park with a Secure Car Park or Park Mark award. Try to park in a well-lit area, even if parking during daylight, it may be dark when you return to your vehicle.
- Lock the doors, windows, boot and sunroof every time you leave your car - however briefly.
- Do not leave anything of value in the vehicle whilst it is unattended. This includes satellite navigation systems, mobile phones, laptops, handbags and jackets. If it is unavoidable, turn all electrical items off and place in the boot.
- Leave the glove compartment open to show there is nothing of value stored within.

More and more people choose to shop from the comfort of their own homes every year and there are plenty of things you can do to stay safe online too:

- Only use well known websites and ones that you trust. Auction sites can be a great way to grab a bargain but remember, if it looks too good to be true, it may well be.
- You don't need to give anyone else your passwords, PINs or any other personal information to shop online. This is your information and yours alone.
- Keep an eye out for scam emails, texts, calls or even people trying to sell things at your door. If in doubt send them away, and call the company they are claiming to be from to double check.
- Avoid viruses, no not coughs and colds – don't open emails from anyone you don't recognise, it could be a scam. You don't always have to enter your information to be at risk.

If you follow our advice to stay safe at parties, shopping and while buying online, we're sure you'll have a Merry Christmas and a Happy New Year.

Follow us on Facebook and Twitter for more information about our Christmas campaign, and for more tips to stay safe this Christmas.

### **COMMUNITY MESSAGING**

We are constantly reviewing our visibility and how we can develop this and work with our communities.

We cannot physically be everywhere all of the time and we want to ensure consistent information with our communities and to be able to provide the information that matters to you when you need it.

There has been some good feedback from our new way of working using Community Messaging so please sign up and use it.

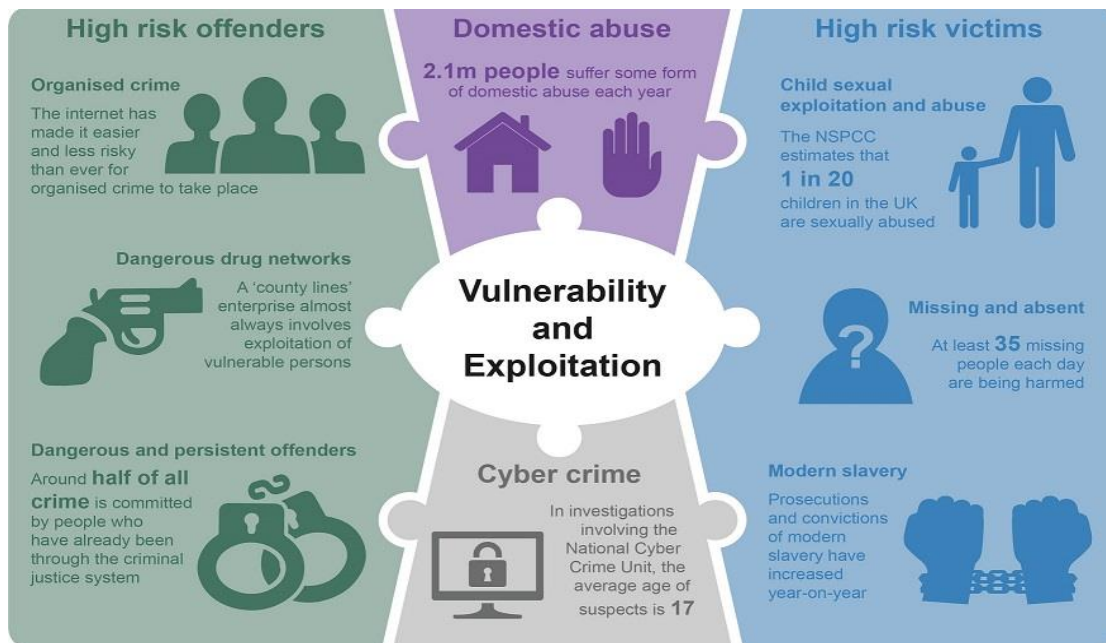
<https://www.wiltsmessaging.co.uk/>

[feedback@wiltshire.police.uk](mailto:feedback@wiltshire.police.uk)

## CONTROL STRATEGY

Below is our control strategy for your reference. This focuses on where how we conduct our operational Policing based on the Police & Crime Plan. We will continue to align our resources with the threat/harm/risks presented in line with the control strategy.

- Domestic abuse / Cyber Crime / High risk offenders / High risk victims



## CURRENT SECTOR SERIES

Crime Exceptions are the volume of crime that exceeds the levels we would expect over a specified period. This is based on evaluation of data, over like to like periods historically.

Incidents crimed as 'Vehicle Offences' are showing slightly higher than average, although still well within the limits that we would expect to see. There appears to be no links between any of the offences, with them occurring throughout the Warminster Town and Rural areas, spread out throughout the month. However, we still continue to see reports of handbags being stolen from vehicles.

During November we reported an incident of Criminal Damage to play equipment in Warminster Town Park. As a result four youths aged 13 and 14 were interviewed in relation to the offence. All admitted their involvement in the incident, and have received Youth Cautions.

During November, we reported a number of incidents of Racially Aggravated Criminal Damage in the Portway Lane area of Warminster. Following my previous update that Aaron MARTIN, 28 years, had been charged with a number of Harassment / Public Order and Damage offences, I can confirm that he appeared before Chippenham Magistrates Court on the 24<sup>th</sup> November 2016 where he was committed to prison for a period of 26 weeks.

For a detailed breakdown of the crime in your area visit...

**<https://www.police.uk/wiltshire/>**

Sector Head Insp 2517 James Brain : [james.brain@wiltshire.pnn.police.uk](mailto:james.brain@wiltshire.pnn.police.uk)

Deputy Sector Head Ps 1801 Louis McCoy : [louis.mccoy@wiltshire.pnn.police.uk](mailto:louis.mccoy@wiltshire.pnn.police.uk)

Community Coordinator Pc 2446 Charly Chilton : [charlotte.chilton@wiltshire.pnn.police.uk](mailto:charlotte.chilton@wiltshire.pnn.police.uk)

[feedback@wiltshire.police.uk](mailto:feedback@wiltshire.police.uk)